



What's New in Version 22

Purpose

To present an overview of the improvements that have been included in this version of the application since Version 21



This presentation is in support of the “What’s New” document that is located in Documentation under References

If Operators have the CAX Module enabled as part of their Software License Key they can follow up using CAX 2022-02-UPDATE

Operating Systems and Compatibility

- Version 22 has been extended to work with the following OS



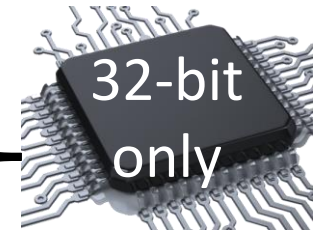
- Version 22 will be the last version to support



Windows 8.1

Microsoft Office

- Version 22 has been extended to work with the following Microsoft Office programs



Cyber Security

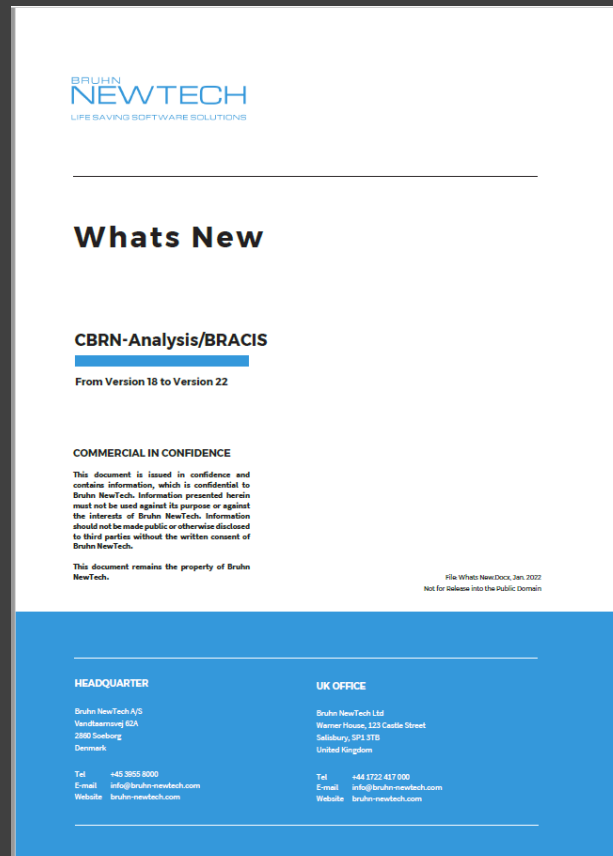


- Installation process has been changed if installing on a multiuser domain
- The XML parser (reading and providing interfaces to XML) has been updated to prevent the use of embedded XML files from external sources



Reference Documents – What's New

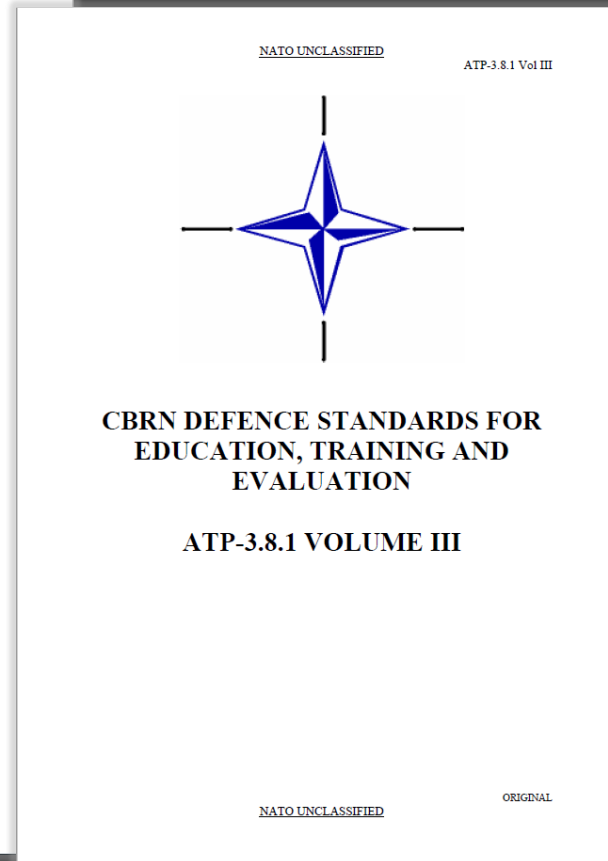
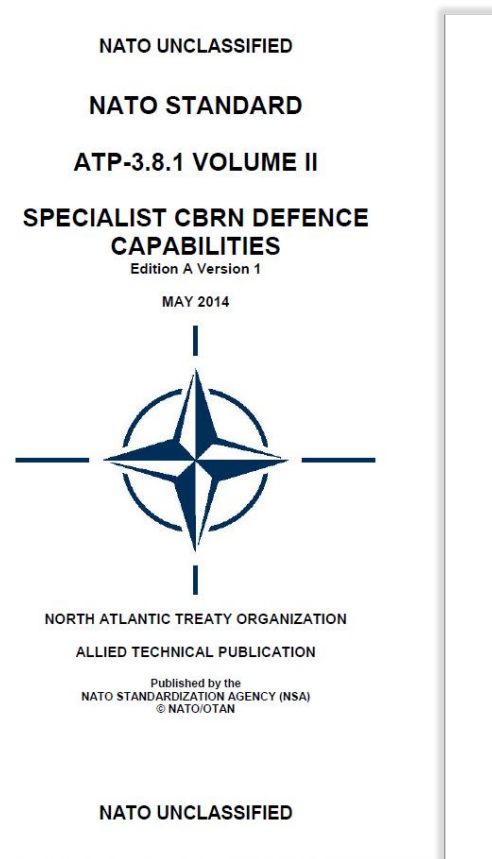
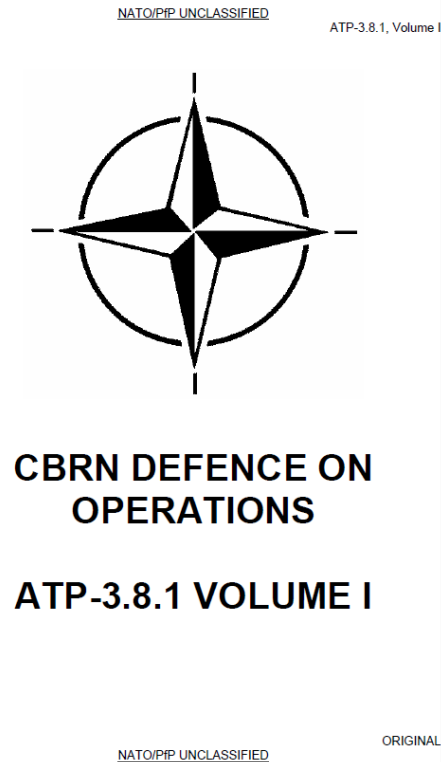
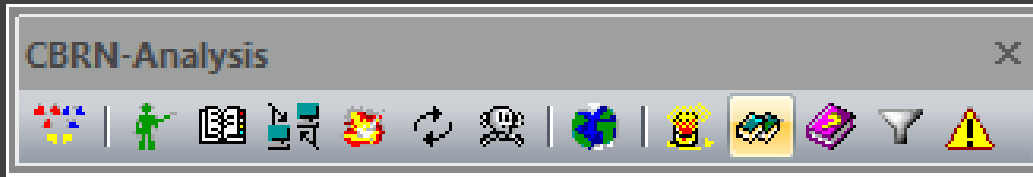
- Indicates current and past enhancements to the application from Version 18 to Version 22





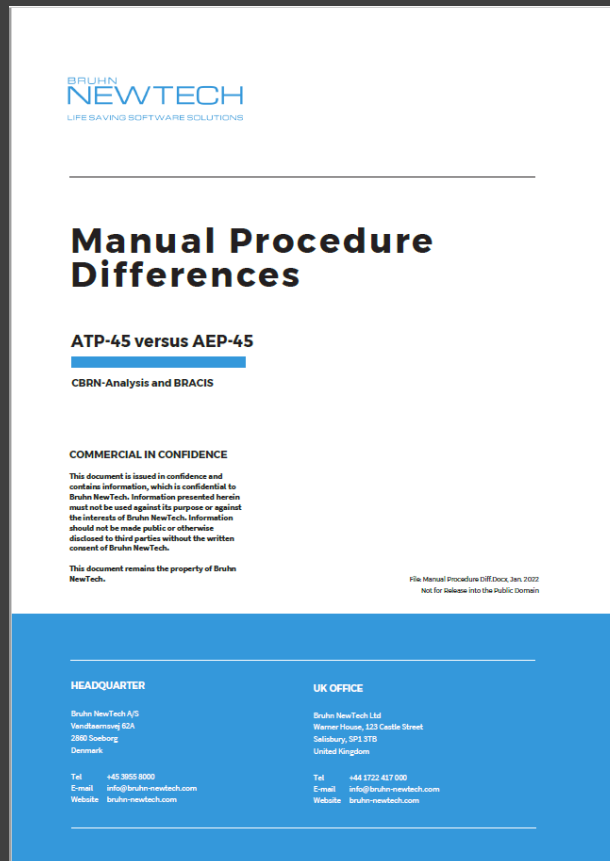
Reference Documents – ATP 3.8.1

- All three volumes now included





Reference Documents – ATP-45 vs AEP-45

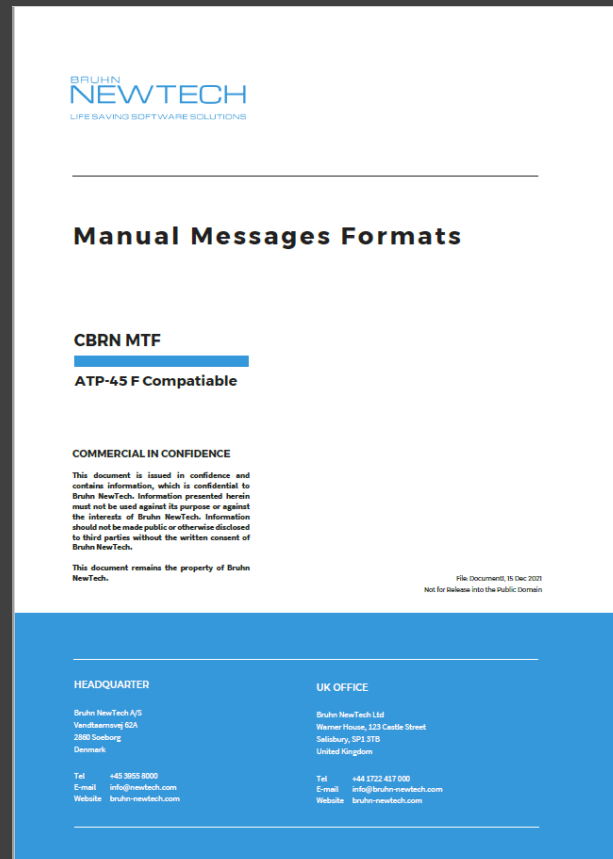


- Several cases are not aligned between the publications, this document indicates the differences between the manual and automated procedures



Reference Documents – CBRN MTF

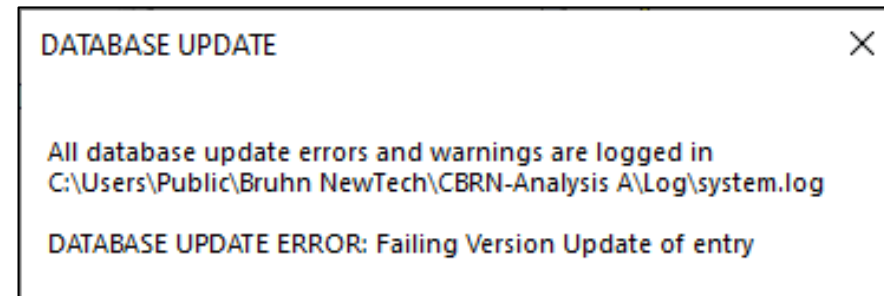
- Only MET, CBRN 1's and CBRN 4's have been included. All updated reports will follow on later in the year



Transfer of Unit databases – APP-6 (A) to APP-6 (D)



- Function has been updated to show a warning window if there is a compatibility issue when transferring old Unit databases in APP-6 (A) format to APP-6 (D) format if the correct map symbology pathway cannot be found





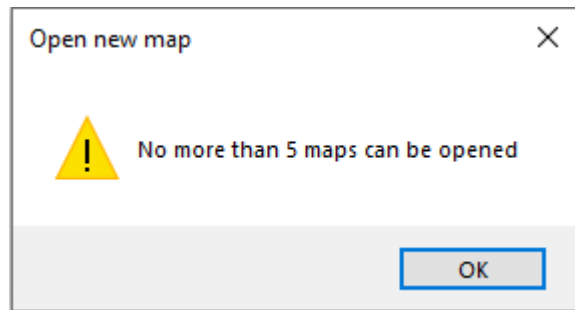
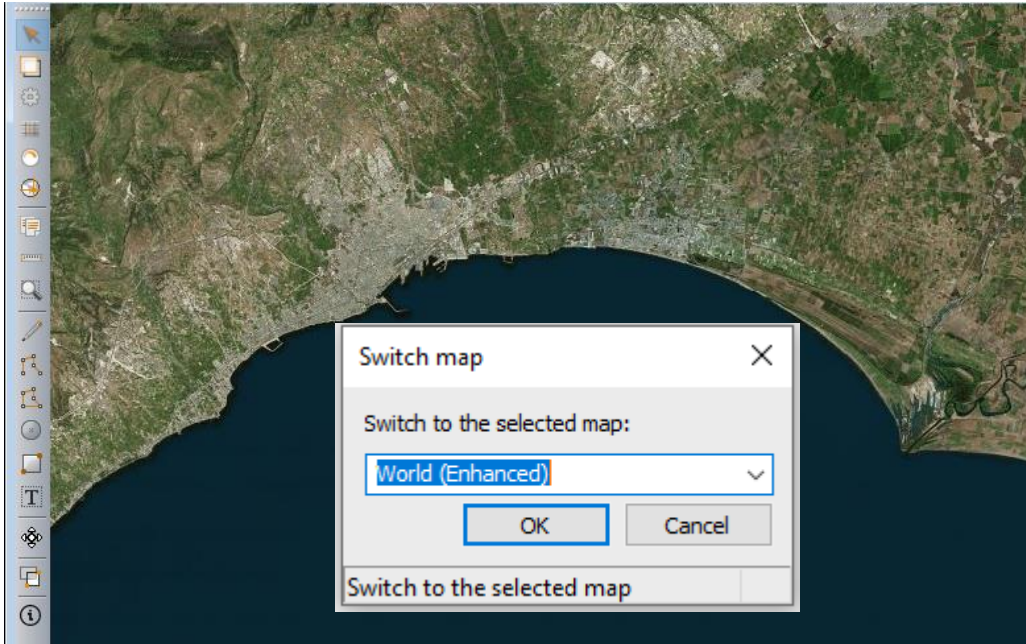
Setup upgrade-Inclusion of Polar MGRS

The screenshot shows the 'Setup' dialog box with the 'Units of Measurement' category selected in the left-hand tree. The tree includes: General, Name of own unit, Units of Measurement (highlighted), CBRN Reports, Map, Calculations, Unit, HPAC, Checklists/Aide Memoire, Printer Settings, CBRN Equipment, and Sensor Definition. The main panel is divided into three sections: 'Location Setup' with 'Extended precision' checked and a 'National Grids' button; 'Units of Measurement' with dropdowns for Time zone (Z), Temperature (C), Location (MGRS 1 Metre), Length (M), Distance (KM), Speed (KPH), Time (HR), Direction (DGG), and Angle (DEG); and 'Display Units of Measurement' with radio buttons for 'As setup in box above' (selected) and 'As provided by originator'. An 'Info' text area is at the bottom, and 'OK', 'Cancel', and 'Default' buttons are at the bottom right. A status bar at the very bottom says 'Select setup page.'

- UTM (MGRS) has been removed from the pick list in the Location field
- It has been replaced with MGRS which includes UTM and UPS for the Northern and Southern Polar regions
- This does have an effect when importing older databases that contain ATP-45 Messages, Units, Crossings and Risk Objects, as they all contain grid locations
- A warning will be displayed if there is a compatibility issue



Map upgrade-Toggle between maps



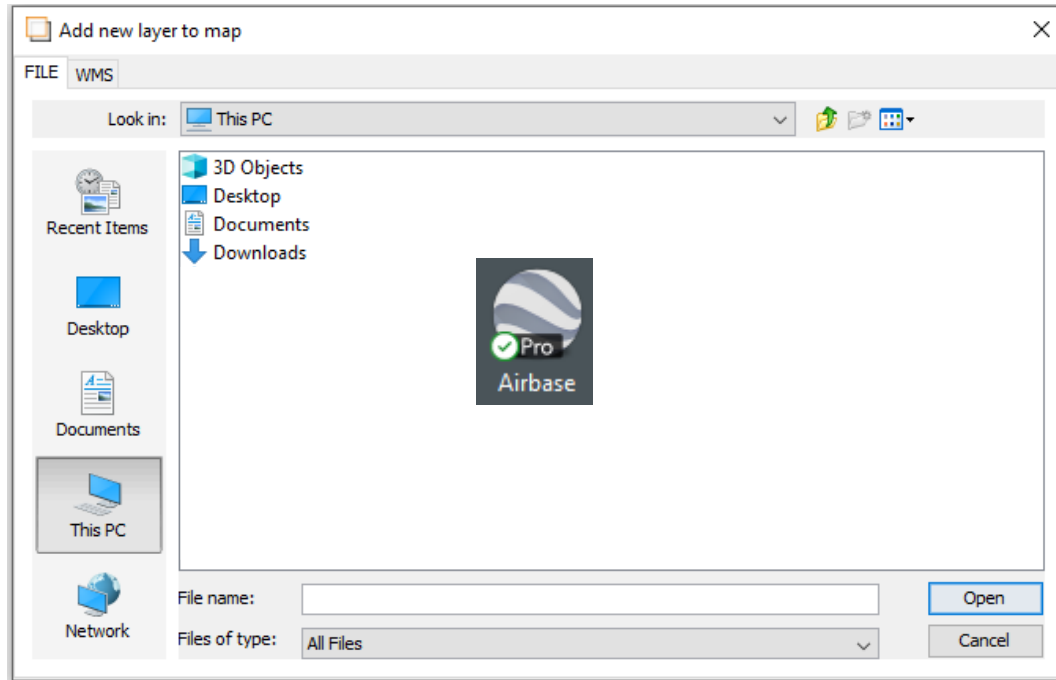
- The World Globe short cut icon now only allows the switching of maps, if the Operator has multiple maps open
- Maps can now only be opened from the Main Menu Bar under the Map function
- A maximum of 5 maps can be opened in the Application at one time, after which, a warning will be displayed indicating to the Operator that no more maps can be opened up



Map upgrade-Display KML files

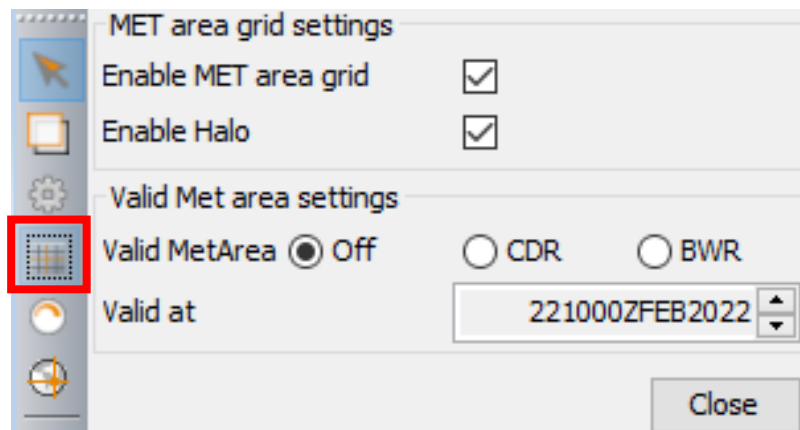
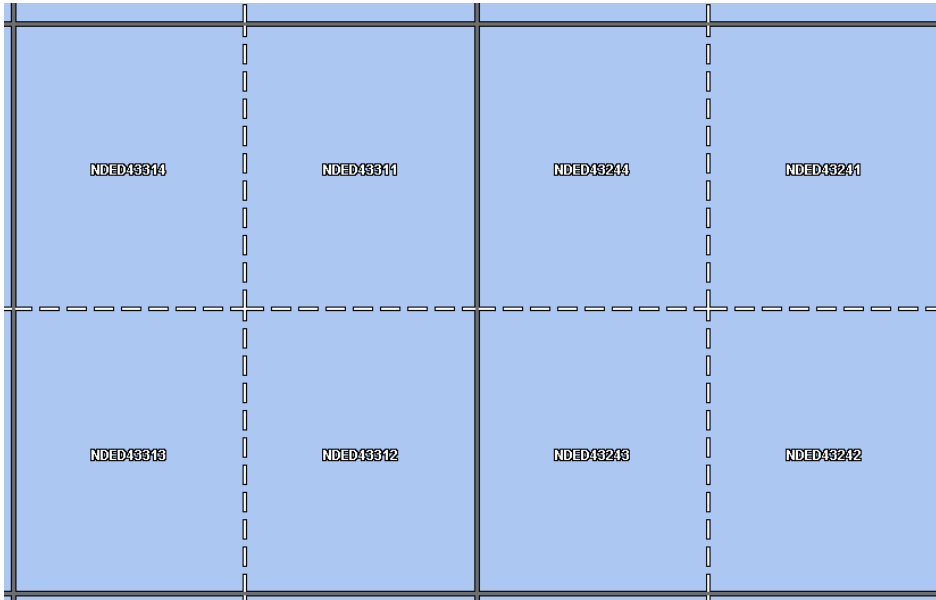


- KML/KMZ files from other applications can be added to the map following the same process as adding other map layers
- Page 6-13, Section 6.5.4 explains the procedure and the limitations
- A Tutorial video will be placed on CAMPUS later on in the year



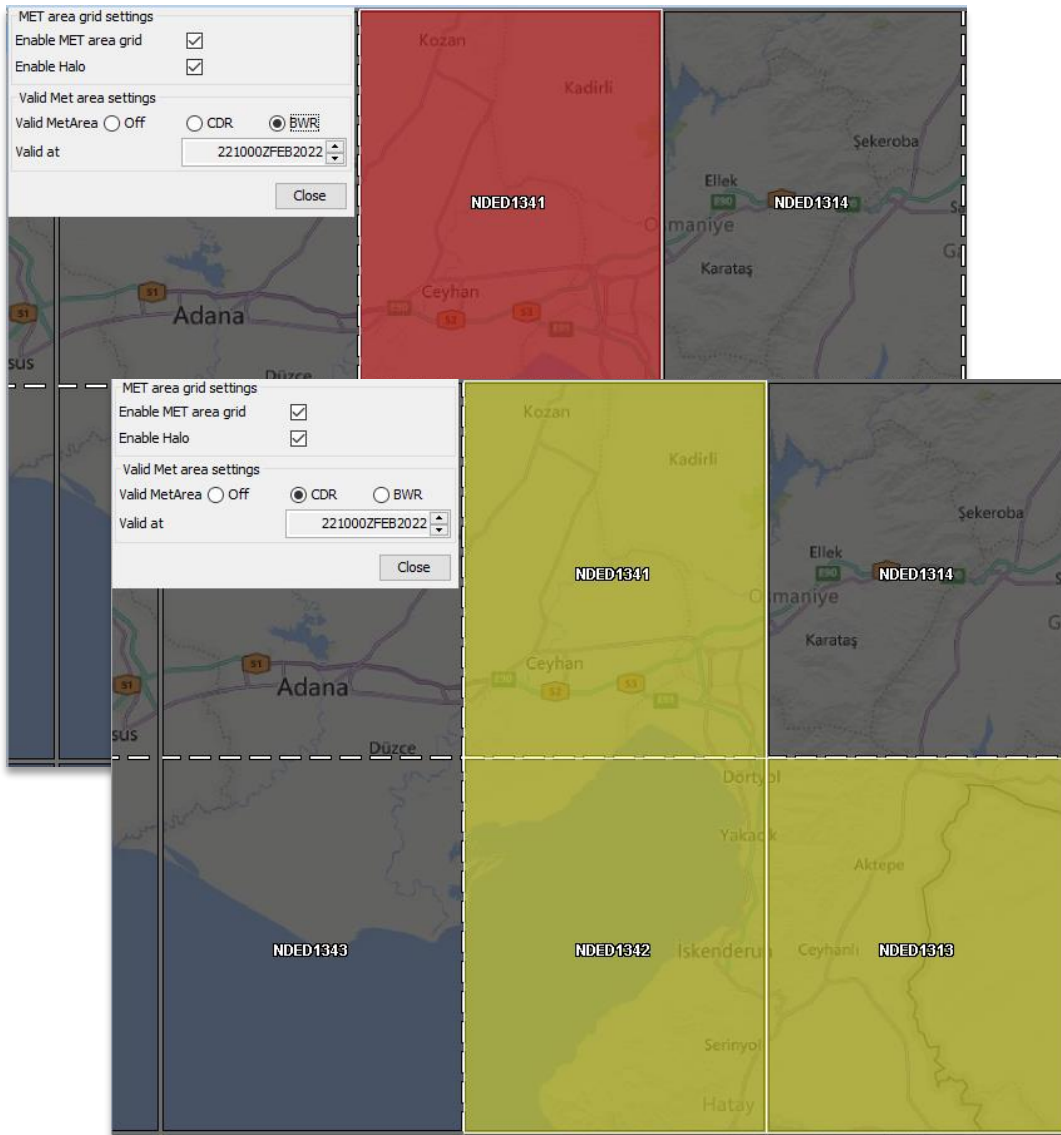


Map upgrade-Visual MET Grid



- CBRN MET areas of validity can be displayed on the map by selecting the Enable/disable Met area icon on the Map toolbar
- The AREAM coverage will be displayed from 4 characters to 12 characters as the Operator zooms in and out from the map
- The information is defaulted not be displayed below 50 Metres or above 1,000 Kilometres

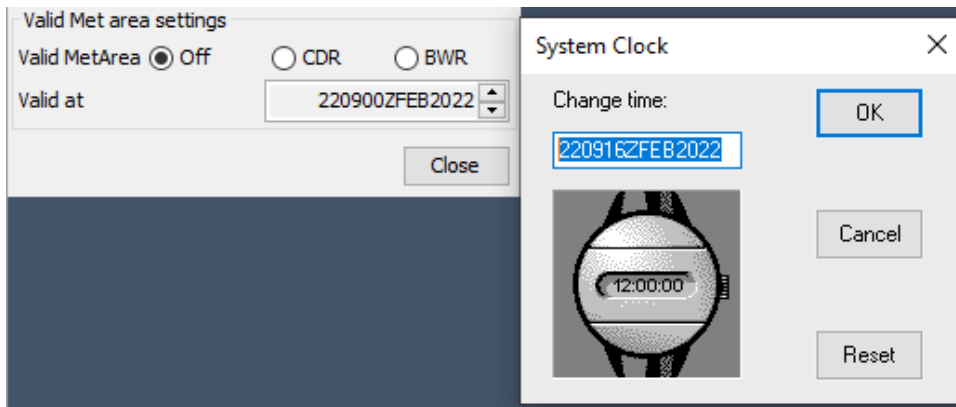
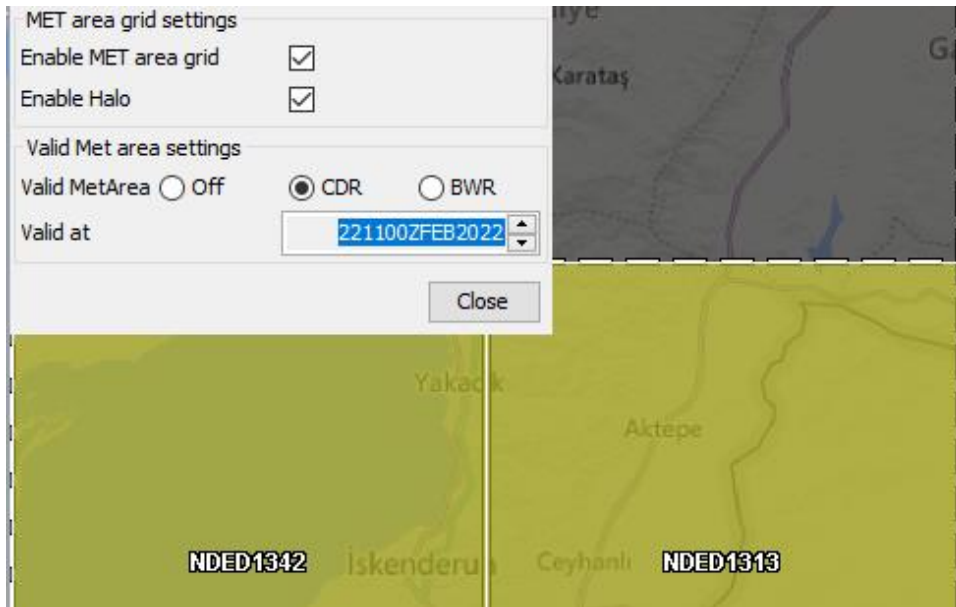
Map upgrade-visual CDR or BWR MET coverage



- Valid CDR and BWR coverage can be displayed on the map underneath Data layers as long as the Valid Met area settings are left open
- As soon as **Close** is selected any CDR or BWR coverage will disappear
- CDR's are displayed in yellow, BWR's are displayed in red
- They cannot be displayed together, it is either to show CDR or BWR coverage



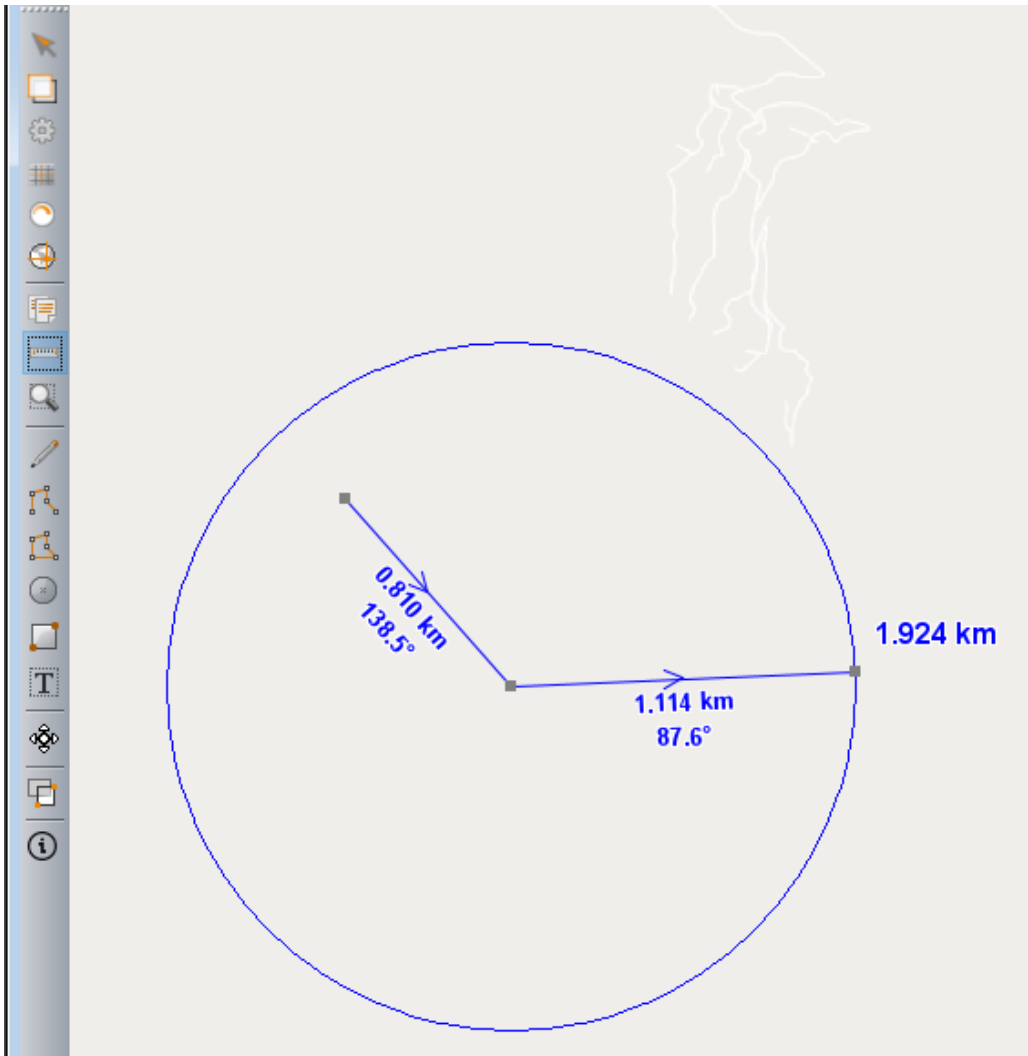
Map upgrade-visual CDR or BWR valid time coverage



- Using the “Valid at” DTG field, the Operator can click the time forward in 1 hour increments to see if they have coverage for up to 12 hours within their AOR
- The time is pre-set and starts in line with the Application System Clock to the nearest hour.



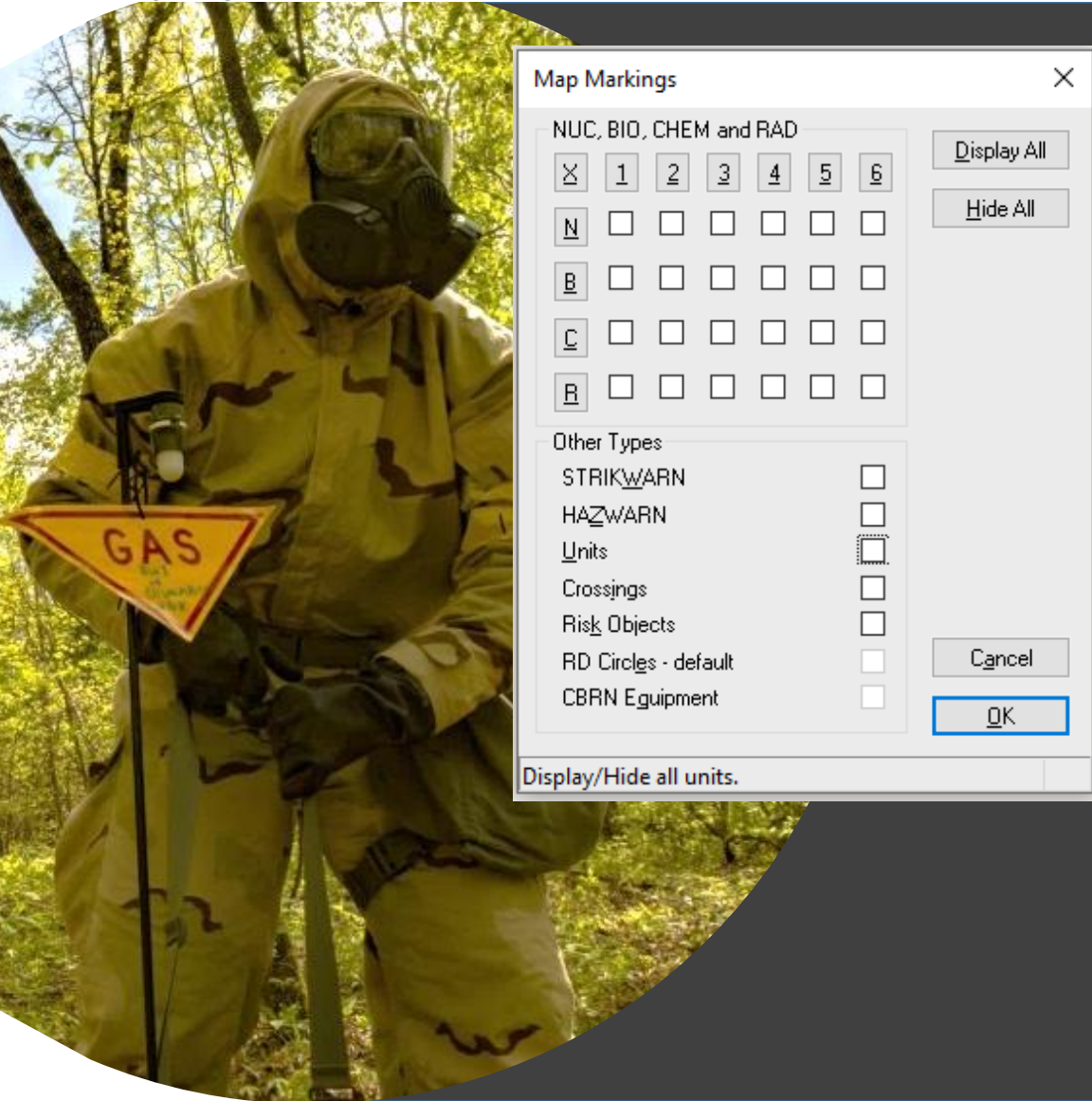
Map upgrade-Ruler



- The Ruler on the Map Tool Bar has been updated to include bearing readings along with the distance readings
- There is a “How to Use the Ruler on the Map Tool Bar” tutorial in CAMPUS. Illustrating how the Ruler can be used by an Operator



Map upgrade-Map Markings (F11)



- New rules have been applied to the Map Markings function (F11). They are explained in detail in the “What’s New” document
- In summary, when an Operator places a tick in the required tick box that item will stay on the map until removed by the Operator
- For example, CBRN 4 Reports will now not disappear from the map when **Calculate** is selected unless the Operator unticks or hides the reports



Map upgrade-Edit CBRN 2 Reports

CBRN 2 CHEM

Header Message Notes Options Attachments

VALCODE 007 UNK ACC-002

ALFA UNK 1 BDE 004 C

DELTA 210900Z FEB 2022 210902Z FEB 2022

FOXTROT 37SBA8383678929 AA

GOLF OBS CAN 16 SHL NSC

INDIA G NP PDS DEF INDIAA M

MIKER ACTIVE

TANGO FLAT BARE AREAM

YANKEE DGG KPH ZULU C

CDR

MATERIAL

GENTEXT CBRN INFO Sensor alarmed during attack in G mode indicating 3 Bars

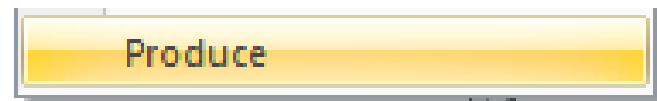
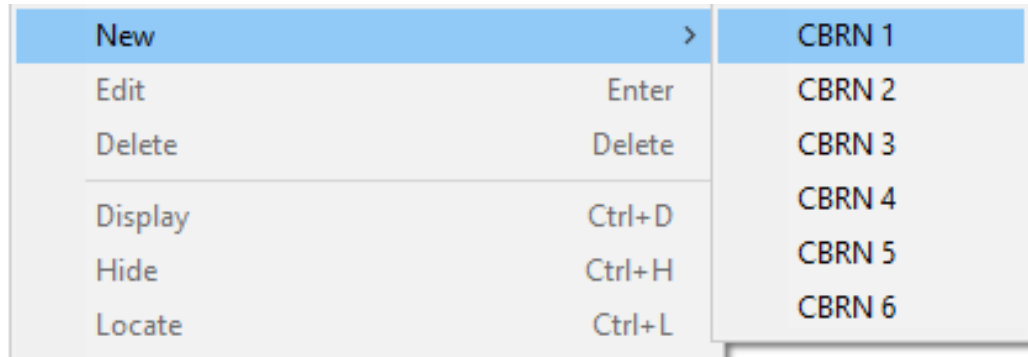
OK Cancel

Save and Exit

- This new feature stops Operators modifying CBRN 3 Reports unless there is a requirement to. To modify a CBRN 3, it must now be done via the CBRN Messages database
- Double clicking inside a template on the map will now open the CBRN 2 Report that can be edited. Once any adjustments have been completed and the report closed from the map, the Operator must **Calculate** to update, this automatically updates the CBRN 3 Report



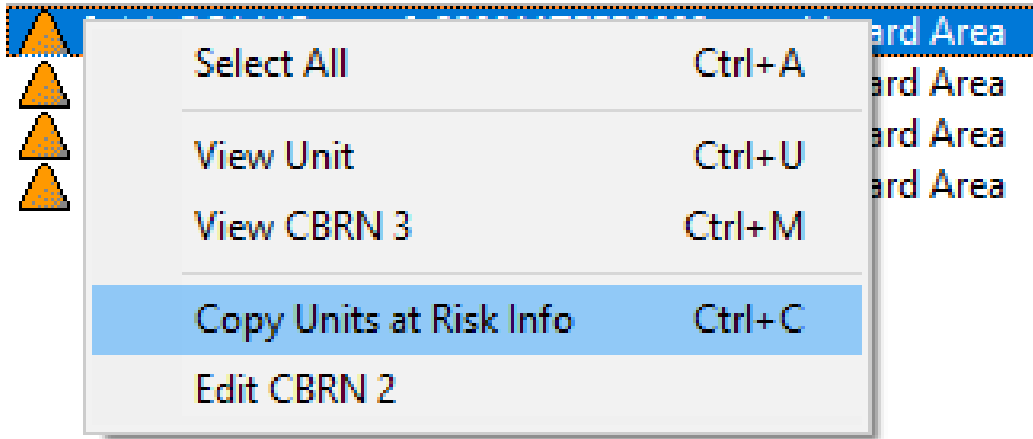
CBRN Messages upgrade-ALFA View



- The CBRN Messages shortcut bar is now available when selecting the ALFA view
- Reports can be created directly from the ALFA view by Right clicking inside the Report area and selecting “New”
- The “Produce” function for a CBRN 2 CHEM or NUC can now be carried out from the ALFA view by highlighting the required report, then selecting “Produce” in Calculations on the Main Menu Bar



Operator assist upgrade-Units at Risk



- One or more Units can be highlighted in Units at Risk, then certain information can be copied to clipboard then pasted into various locations i.e., GENTEXT or Attachments of a Report, PPT, Word documents etc
- Operators can copy information from Units at Risk then if required use the Edit CBRN 2 Report option to open the required CBRN 2 and then paste directly in GENTEXT

Unit: BG1 HQ, ETA: 220844ZFEB2022, LTA: 220911ZFEB2022, Area: Hazard Area
Unit: BG2 HQ, ETA: 220853ZFEB2022, LTA: 220936ZFEB2022, Area: Hazard Area
Unit: SP, ETA: 220856ZFEB2022, LTA: 220946ZFEB2022, Area: Hazard Area
Unit: BDE HQ, ETA: 220909ZFEB2022, LTA: 221025ZFEB2022, Area: Hazard Area



Operator assist upgrade-MIKER1 field

0 MIKER

ACTIVE



- Reports are considered “Active” until the incident is made “All Clear”
- This function will automatically update the CBRN 2, CBRN 3 and CBRN 6 Reports once the All Clear procedures have been used in either the Wizard, the CBRN 2 Report or the CBRN 6 Report
- It will also insert text in the GENTEXT field of the Reports stating “MIKER1 updated from ACTIVE to CLEAR”

CBRN INFO

MIKER 1 updated from ACTIVE to CLEAR



Minor adjustments the Operator doesn't see

```
each: function(e, t, n) {
  var r, i = 0,
      o = e.length,
      a = M(e);
  if (n) {
    if (a) {
      for (; o > i; i++)
        if (r = t.apply(e[i], n), r === !1) break
    } else
      for (i in e)
        if (r = t.apply(e[i], n), r === !1) break
    } else if (a) {
      for (; o > i; i++)
        if (r = t.call(e[i], i, e[i]), r === !1) break
    } else
      for (i in e)
        if (r = t.call(e[i], i, e[i]), r === !1) break;
    return e
  },
  trim: b && !b.call("\uffff\u00a0") ? function(e) {
    return null == e ? "" : b.call(e)
  } : function(e) {
    return null == e ? "" : (e + "").replace(C, "")
  },
  makeArray: function(e, t) {
    var n = t || [];
    return null != e && (M(Object(e)) ? x.merge(n, "string" == typeof e ? [e] : e) : n.call(n, e)), n
  },
  isArray: function(e, t, n) {
    var r;
    if (t) {
      if (n) return a.call(t, e, n);
      for (r = t.length, n = n ? 0 > n ? Math.max(0, r + n) : n : 0; r > n; n++)
        if (n in t && t[n] === e) return n
    }
  }
```

- Alignment of LTA with Moving Band and ADT
- Adjustment of LTA to wind speeds below 5 KPH
- Forcing the Application to work if the Microsoft MAPI profile is incorrect
- Stopping the Application from rebooting if the MAPI profile is reconfigured
- Enhancing the response time when receiving large messages with attachments
- The ability to receive multiple messages in XML-MTF format via Email



Questions or Comments

Contact

Please feel free to contact us if you have any questions or comments. We look forward to hearing from you.

Subject

Feedback

Training

Feedback

Suggestions

Contact

Ideas

Support

Other

Phone

Your Name

Email

Attachment

Choose file No file chosen

Your Message

SEND




- Please feel free to contact us via CAMPUS with any observations, comments or questions that either relate to v.22 or any suggestions for improvements to the Application that you as an Operator would like to see
- <https://campus.bruhn-newtech.com/>
- We are here to assist and support you to get the maximum capability out of our products




THANK YOU




CONTACT DETAILS

 support@bruhn-newtech.com
 +45 3955 8000
 bruhn-newtech.com

HEAD QUARTER

 Bruhn NewTech A/S
Vandtaarnsvej 62A
2860 Soeborg
Denmark

UK OFFICE

 Bruhn NewTech Ltd
Warner House
123 Castle Street
Salisbury SP1 3TB
United Kingdom