



BRUHN
NEWTECH
LIFE SAVING SOFTWARE SOLUTIONS

CBRN-Analysis - Software License Key (SLK)



How does it work?

How does the software license key work? In short:

- CBRN-Analysis must be activated using a activation key (this has to be done by internet access either directly via a wizard or indirectly using a browser)
- Single software licenses will be node locked to a specific PC/Laptop
- National licenses will NOT be node locked

There are two factors that determine the precise activation process:

- Does the CBRN-Analysis computer have direct Internet access?
- Is a National or a Single User License required for CBRN-Analysis?

How to activate CBRN-Analysis

Subscription Single User – Updating Versions

For these example slides the Operator has V.20 installed and is going to update to V.21 of CBRN-Analysis

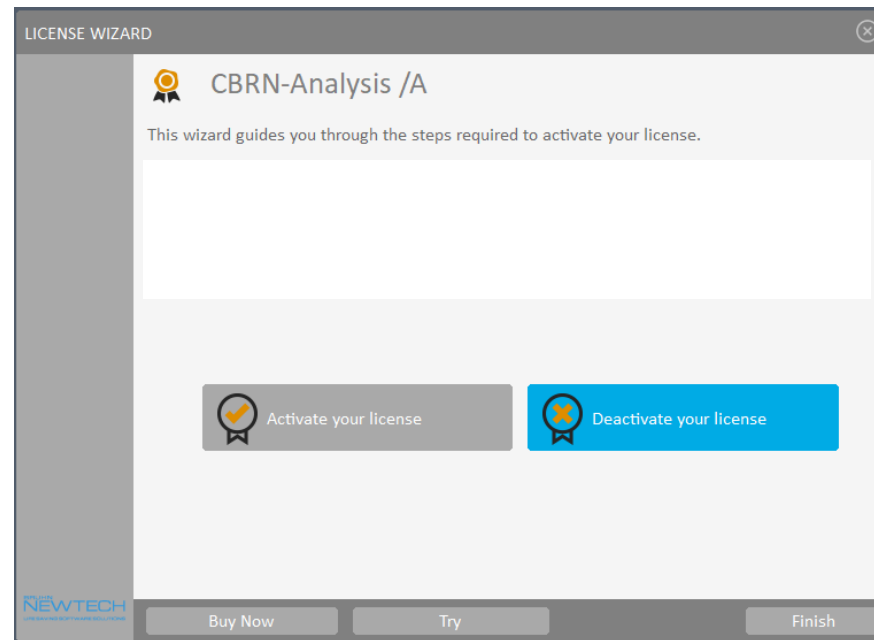
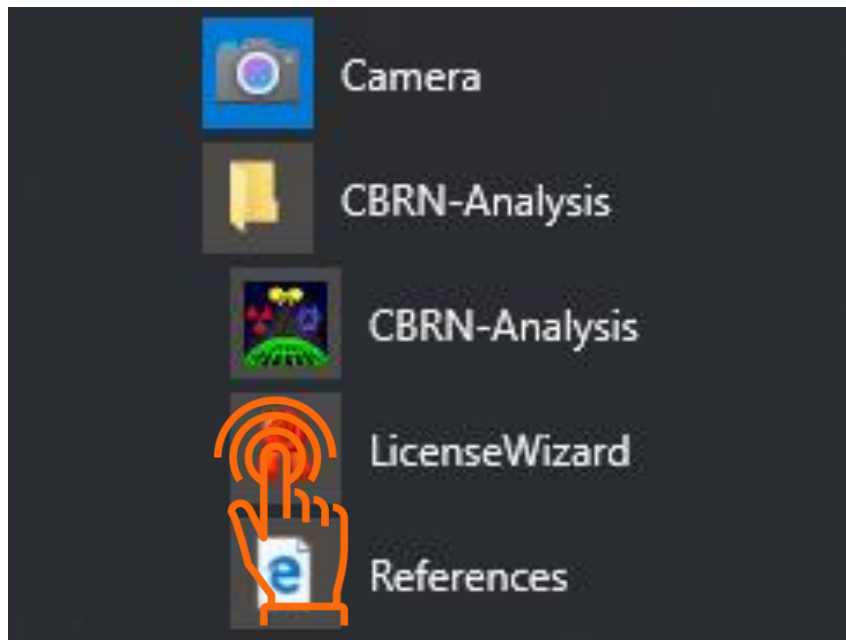
First and most important is to deactivate the V.20 License before uninstalling the software



How to activate CBRN-Analysis

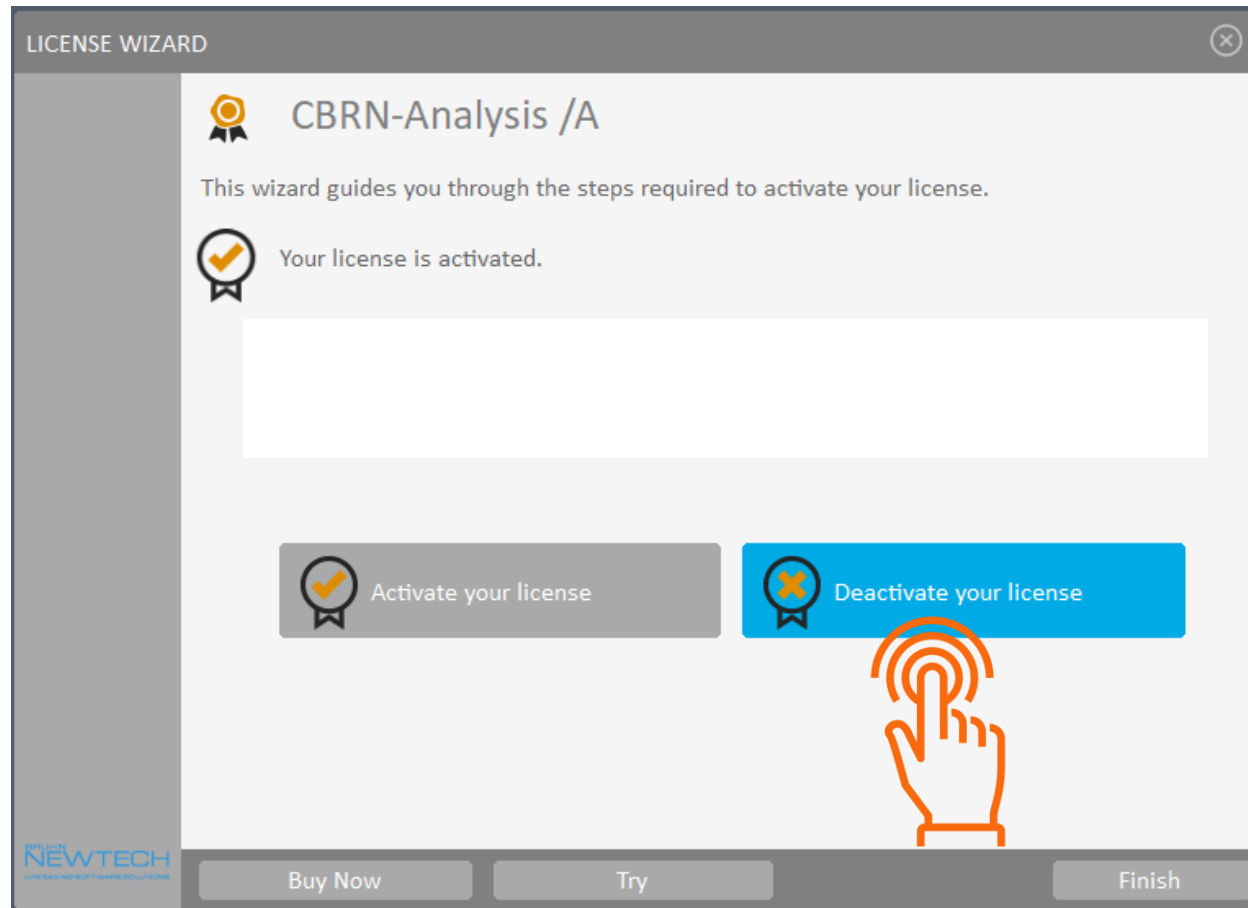
Subscription Single User – Updating Versions

Click onto the LicenseWizard icon to see the options available



How to activate CBRN-Analysis

Subscription Single User – Updating Versions



Now carry out the procedure to deactivate the V.20 Software License Key

The procedure is explained in a different section of this slide pack

How to activate CBRN-Analysis

Subscription Single User – Updating Versions

Once the Software License Key is deactivated

Uninstall the old version of the software (in this case V.20)

Only the Program files will be uninstalled, the Users Files and folders will still be available to transfer to the new Version of CBRN-Analysis (in this case V.21)



How to activate CBRN-Analysis

Subscription Single User – Updating Versions



Must have Administrator rights to the Operating System

Install the software (in this case V.21)



By DVD or Downloaded Folder



Following the instructions in the Installation Guide which are provided in hard copy (DVD) or in PDF in the References Folder that can be accessed before installation.

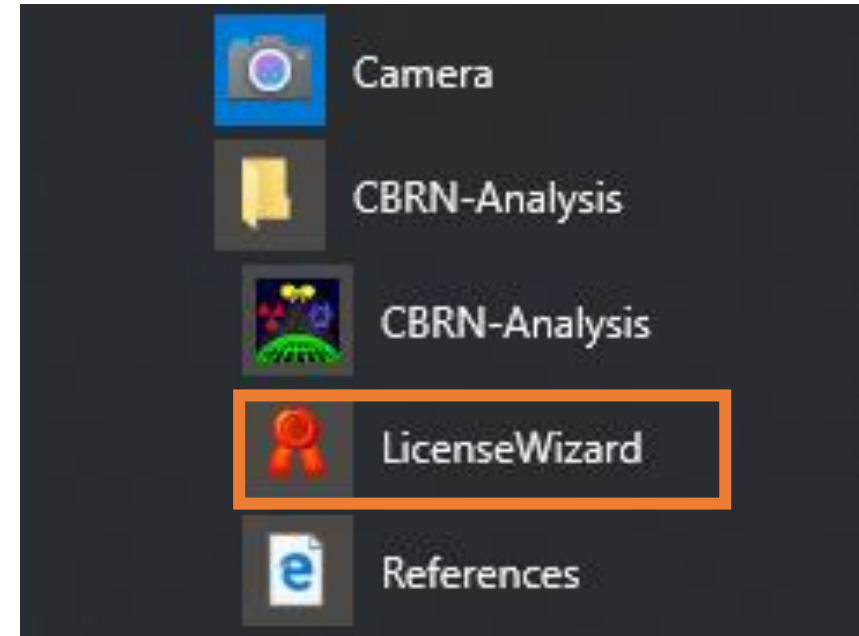


How to activate CBRN-Analysis

Subscription Single User – Updating Versions

Carry out the same procedure as described before for single user Online or Offline
Reactivation

For subscription Users the same Software License Key Activation Code may be used for the full time period of the CBRN-Analysis contract



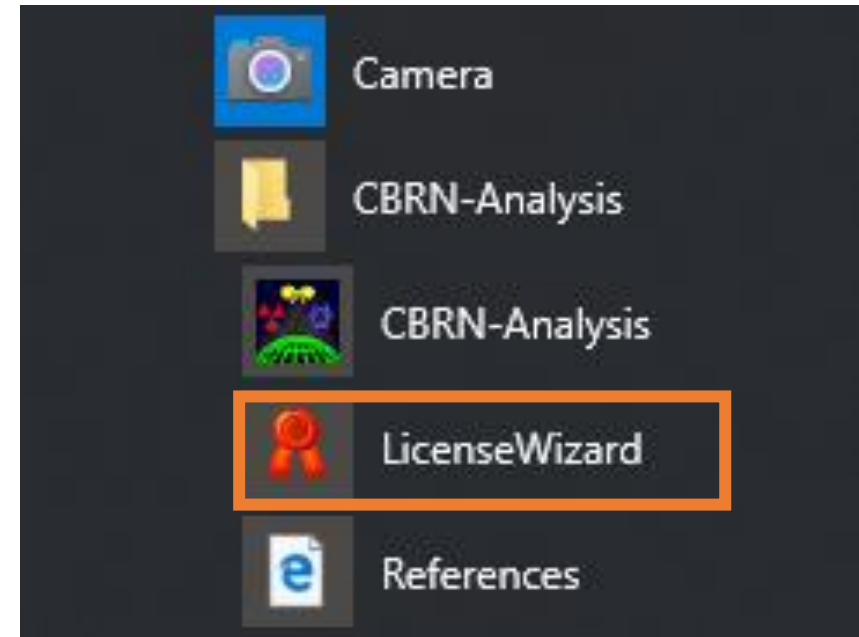
How to activate CBRN-Analysis

SUMA Single User – Updating Versions

Carry out the same procedure as described before for single user Online or Offline

Activation

For SUMA Users a new Software License Key Activation Code will be issued for each new version of CBRN-Analysis within the maintenance plan of the SUMA License agreement



Single User License

Activation procedure – to be done by each user



- Install CBRN-Analysis, new or update version as described
- Run the software license wizard, either as
 - Online
 - Offline
- The Software License Key Activation code will be the same for each User to the maximum number of licenses allowed
- If a User for example has 10 licenses then they can only install CBRN-Analysis onto 10 computers/laptops.
- The Software License Key Activation code is programmed to know that 10 is the amount allowed.

Changing an existing license

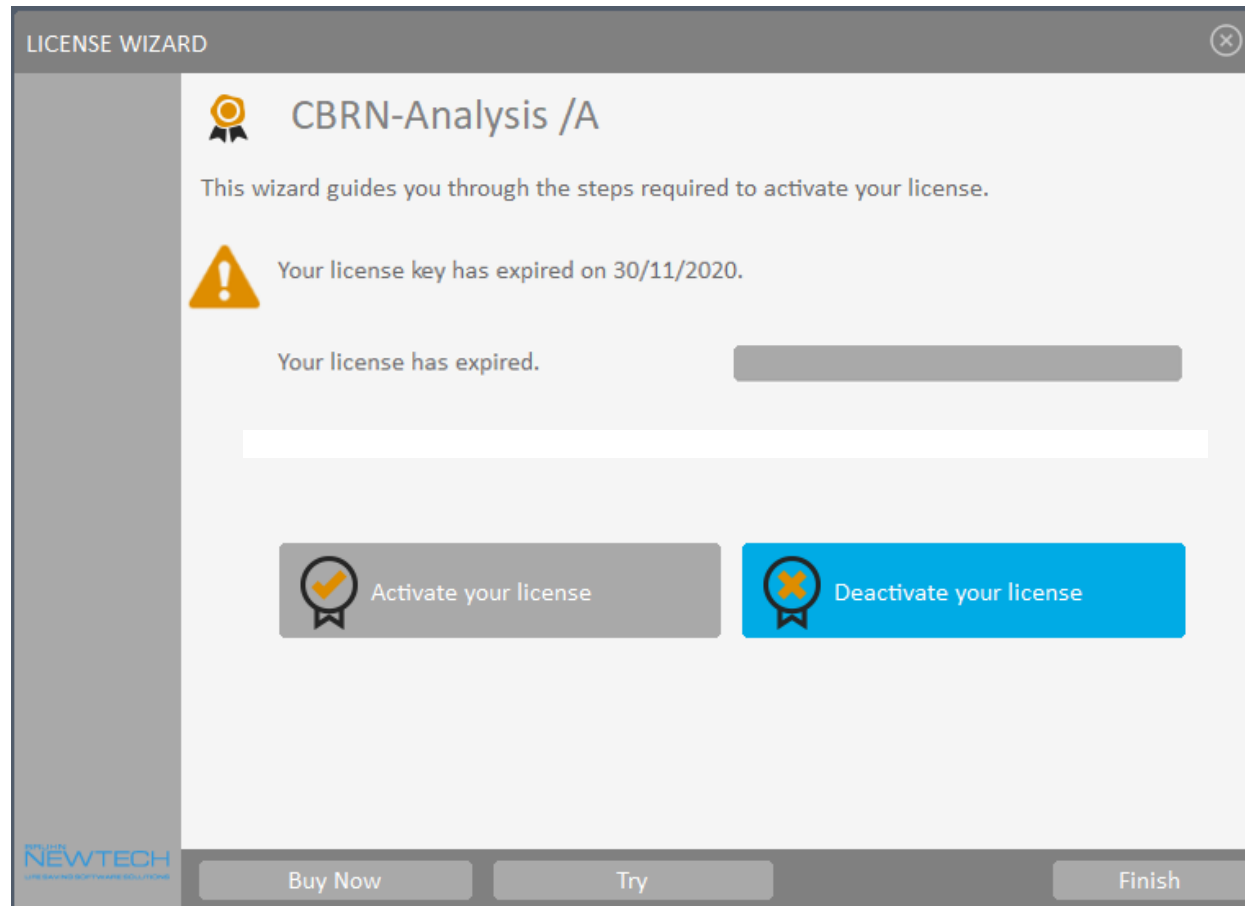
After having activated a license key, many questions may arise, like:

- How do I deactivate a license?
- How do I re-activate a subscription license, when CBRN-Analysis is upgraded?
- How do I move a node locked license to another computer?
- How do I activate a new module in CBRN-Analysis?
- ...

The two main procedures are “Activate” and “Deactivate”



Software License Wizard, Deactivate




Deactivation is used for three reasons:

- If the Software License Key time period has expired
- When updating from one version of the software to the next
- When switching CBRN-Analysis from one computer to another



Software License Wizard, Online deactivate


LICENSE WIZARD


 Deactivate your license

To deactivate your license from this computer, enter your Activation Key in the field below and click Deactivate. After deactivating the license from this computer, you will be able to activate it on another computer.

Activation Key

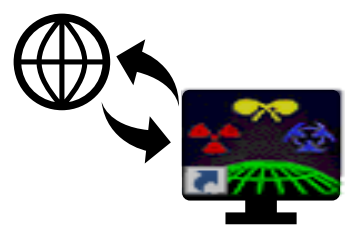
[Proxy Settings](#) [Deactivate license key](#)



 Buy Now Try < Back Cancel

Deactivation:

- Activation key is prefilled by the software
- Click the deactivate button – What happens depends on whether the CBRN-Analysis computer is online or offline.



Software License Wizard, Online deactivate

If the CBRN-Analysis computer is online:

- Press Finish to complete deactivation

The screenshot shows a window titled "LICENSE WIZARD" with a close button in the top right corner. The main heading is "Deactivate your license" with a warning icon. Below the heading is a paragraph: "To deactivate your license from this computer, enter your Activation Key in the field below and click Deactivate. After deactivating the license from this computer, you will be able to activate it on another computer." There is a text input field labeled "Activation Key" containing the alphanumeric string "BNQ17-F2500-GHJKM-18P91-310IP-HMMFT-3HHV8-6X4F" and a checkmark icon to its right. Below the input field are two buttons: "Proxy Settings" and "Deactivate license key". A success message box with a checkmark icon and the text "Your license was successfully deactivated." is highlighted with an orange border. At the bottom of the window, there are three buttons: "Buy Now", "< Back", and "Finish". A hand icon is pointing at the "Finish" button. The Bruhn Newtech logo is visible in the bottom left corner of the window.



Software License Wizard, Offline deactivation

Deactivation verification

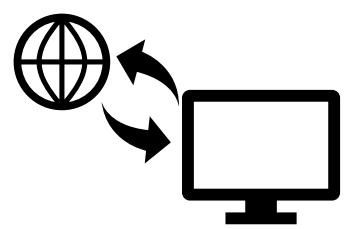
Send us the deactivation verification code below as a confirmation that you deactivated your license.

92b8a5669a20db982bdaa506b02810f6

Ok

If the CBRN-Analysis computer is offline, this window will appear.

- Write down, the **“Verification Code”**, as this is needed on an online computer to deactivate the software.

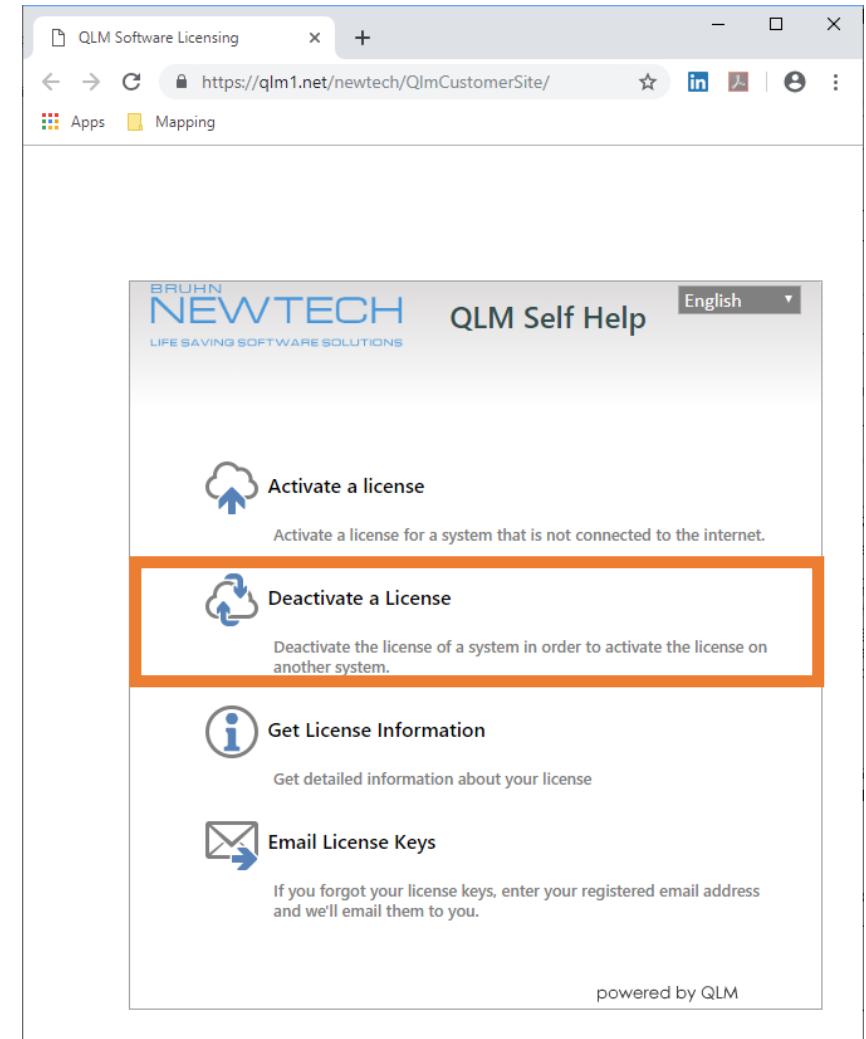


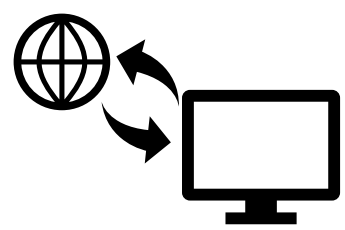
Software License, Offline deactivation

Go to a computer with Internet access, Go to the Bruhn NewTech Quick License Manager (QLM) webpage:

<https://bruhn-newtech.com/qlm/newtech/QLmCustomerSite/>

- Select Deactivate a license





Software License, Offline deactivation

Enter the following to deactivate the CBRN-Analysis program that is installed on the computer without internet access:

- Enter the Activation Key Code (this will be the old code if updating versions i.e. V.20 if updating to V.21) **1**
- Enter the **Computer ID** (from the computer that has CBRN-Analysis on it, only required for Single User licenses) **2**
- Enter the **Verification Code** (from the computer that has CBRN-Analysis on it) **3**
- Click the Deactivate button **4**

Release License

https://qlm1.net/newtech/QLmCustomerSite/

Apps Mapping

BRUHN NEWTECH License Deactivation
LIFE SAVING SOFTWARE SOLUTIONS

Enter your Activation Key and Computer ID
If your Activation Key is associated to a single system, the Computer ID field is optional

Activation Key **1**

Computer ID **2**

Verification Code **3**

Deactivate **4**

powered by QLM

Deactivate CBRN-Analysis

Subscription Single User

Once the Software License Key is deactivated
Then various options are available:

Uninstall the software

Reinstall on a different computer

Install an updated version on a different computer





Software License, Reactivation

If you have CBRN-Analysis Version **20 A, F or I** and are updating Version 21 then you must carry out the following procedure:

- Deactivate Version 20 Software License Code
- Uninstall Version 20
- Install Version 21
- Reactivate your old SLK code to get Version 21 working

Support – Single User Software License Key

For Single User Licenses CBRN-Analysis must be activated on EACH computer running CBRN-Analysis.

- Use the Activate procedure after installation of CBRN-Analysis
- Use the Deactivate and Activate procedures to move CBRN-Analysis to another computer or update a version
- More information is available in the Installation Guide
- Separate visual flowcharts are available on request

If the Software License Key cannot be activated or deactivated e.g. due to computer failure, Bruhn NewTech can be contacted during normal office hours to have the key activated/deactivated immediately.



THANK YOU

