

BRUHN  
**NEWTECH**  
LIFE SAVING SOFTWARE SOLUTIONS

# How to set up own Mail Box for LAN Media



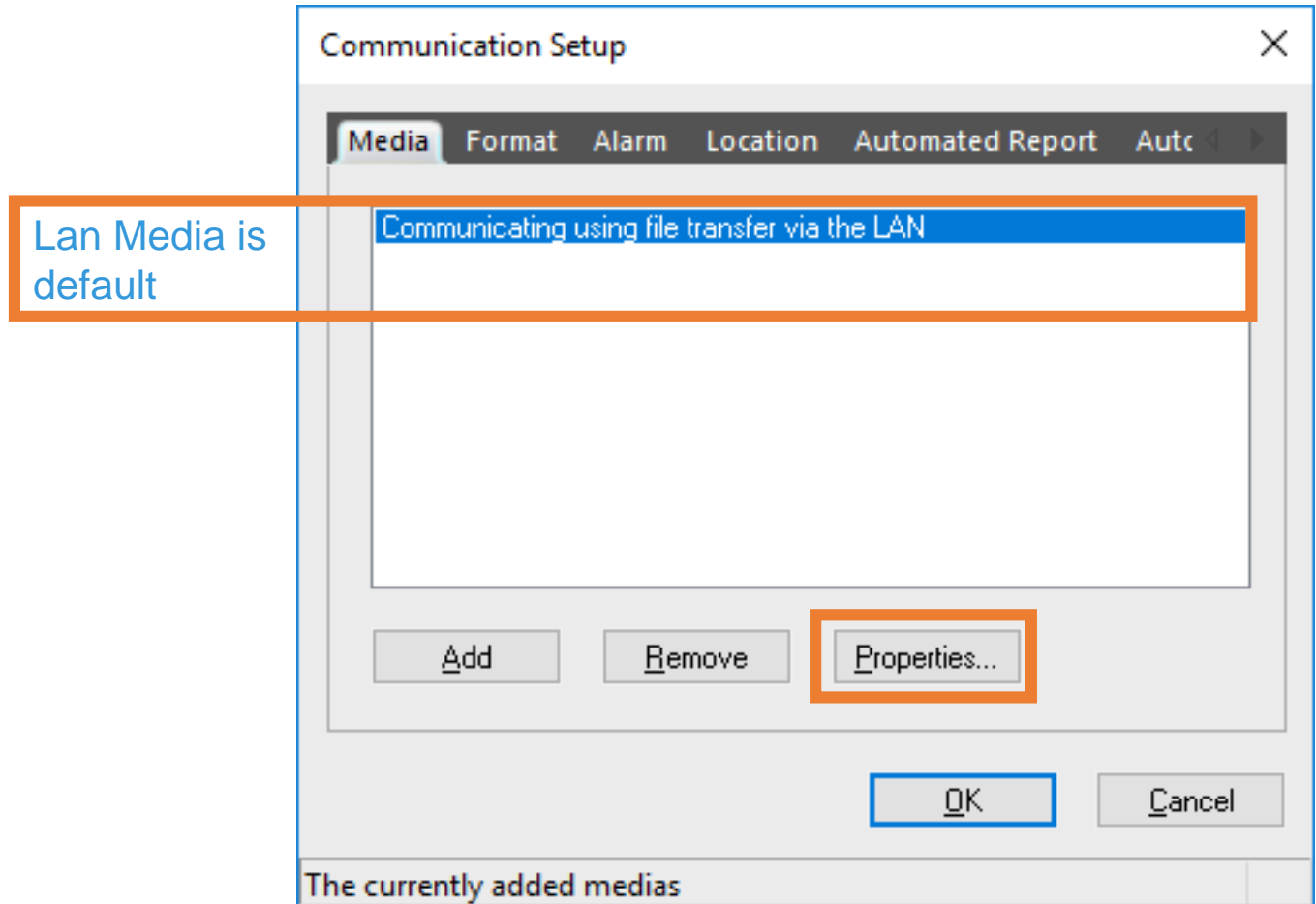
[www.bruhn-newtech.com](http://www.bruhn-newtech.com)

# Communication – Own Mail Box - LAN

- Click on Menu: File
- Click on Properties
- Click on Communication

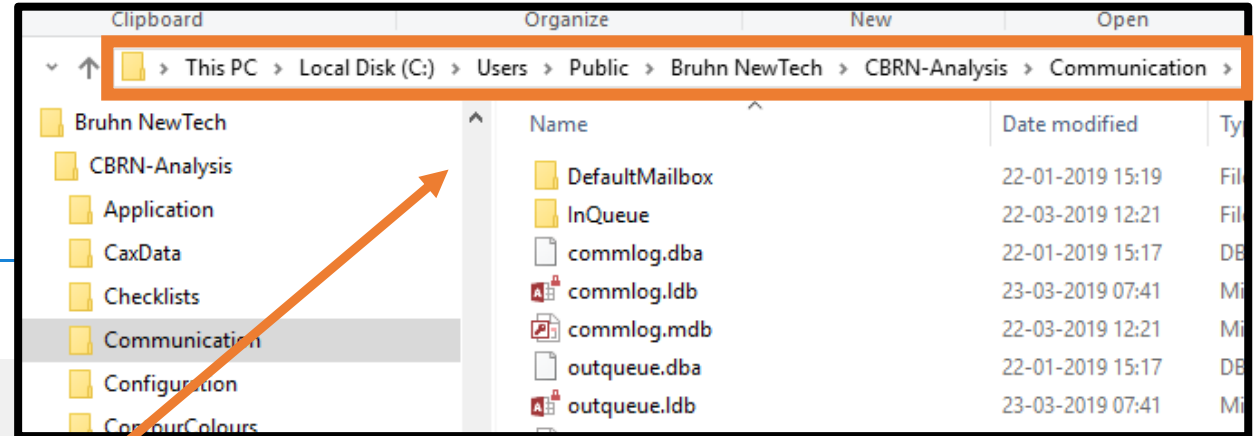
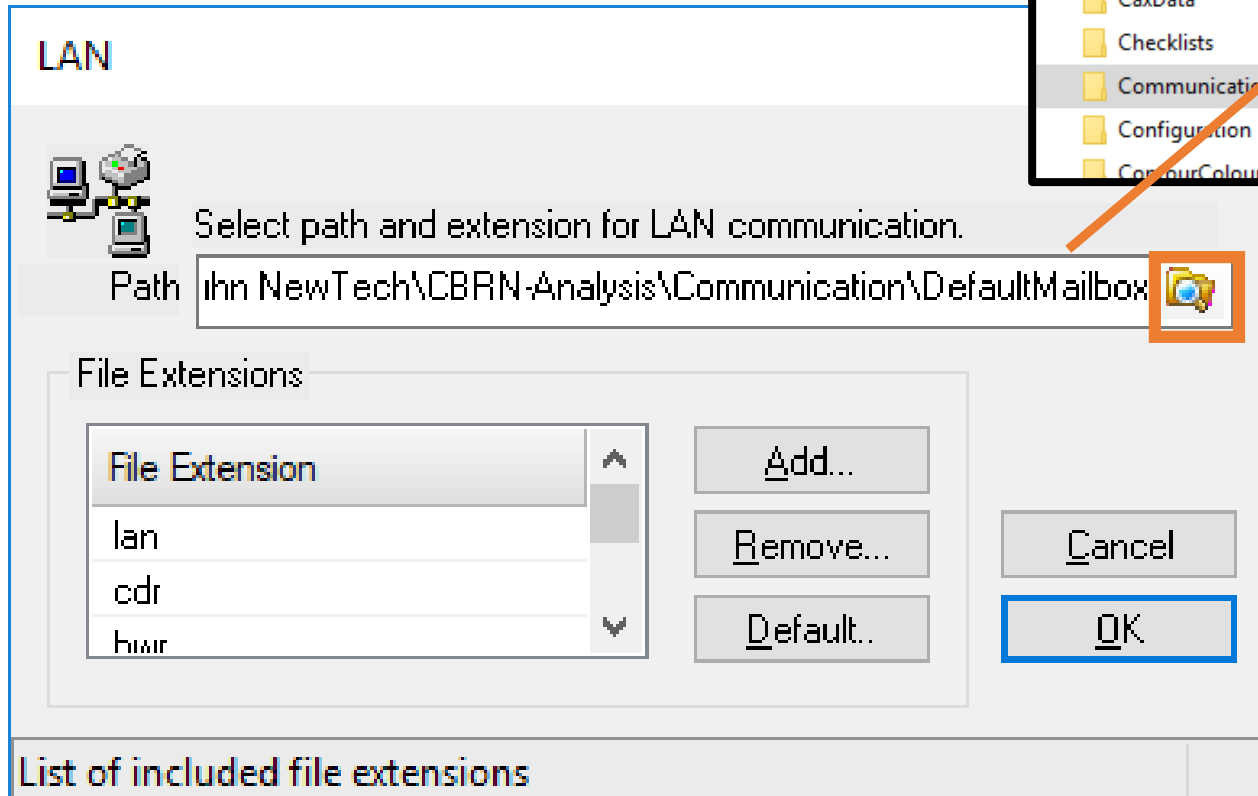
LAN media is default and is shown immediately

- Click on Properties



# Communication – Own Mail Box - LAN

The path to the default mailbox will be shown



But your mailbox  
at the course or in a  
real situation is  
different, so -

- Click on browse

# Communication – Own Mail Box - LAN

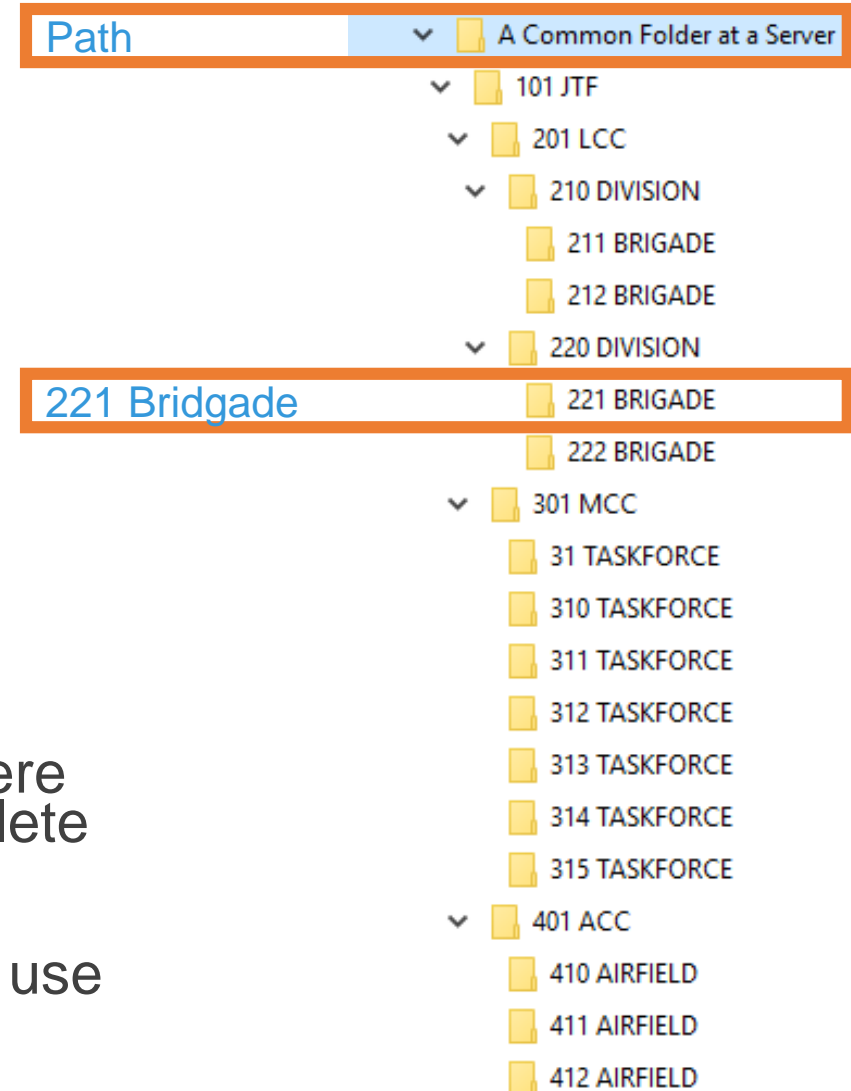
Find the path to the folder e.g. on the server computer in this example “**221 BRIGADE**”

221 BRIGADE is the folder that will hold data that other users will send to 221 BRIGADE

It is **221 BRIGADE** mail box

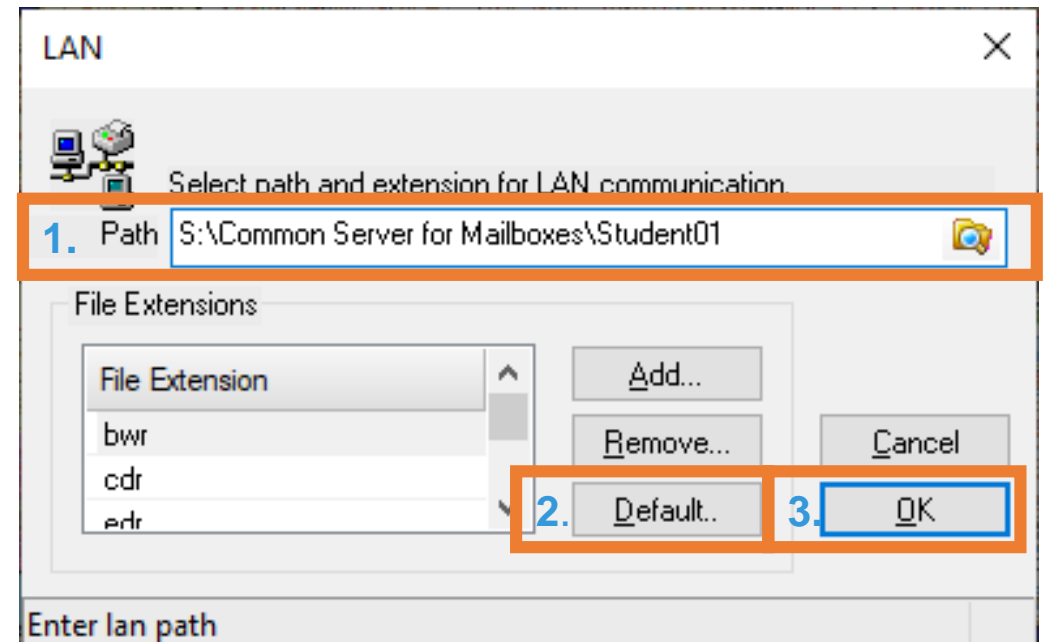
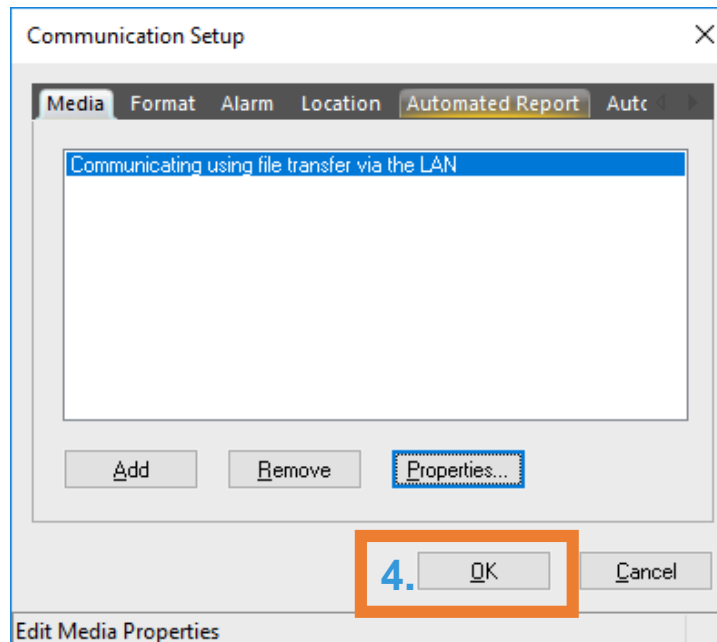
The mailboxes are named folders on a server where all users have access and can read, write and delete

They must be created by the administrator before use

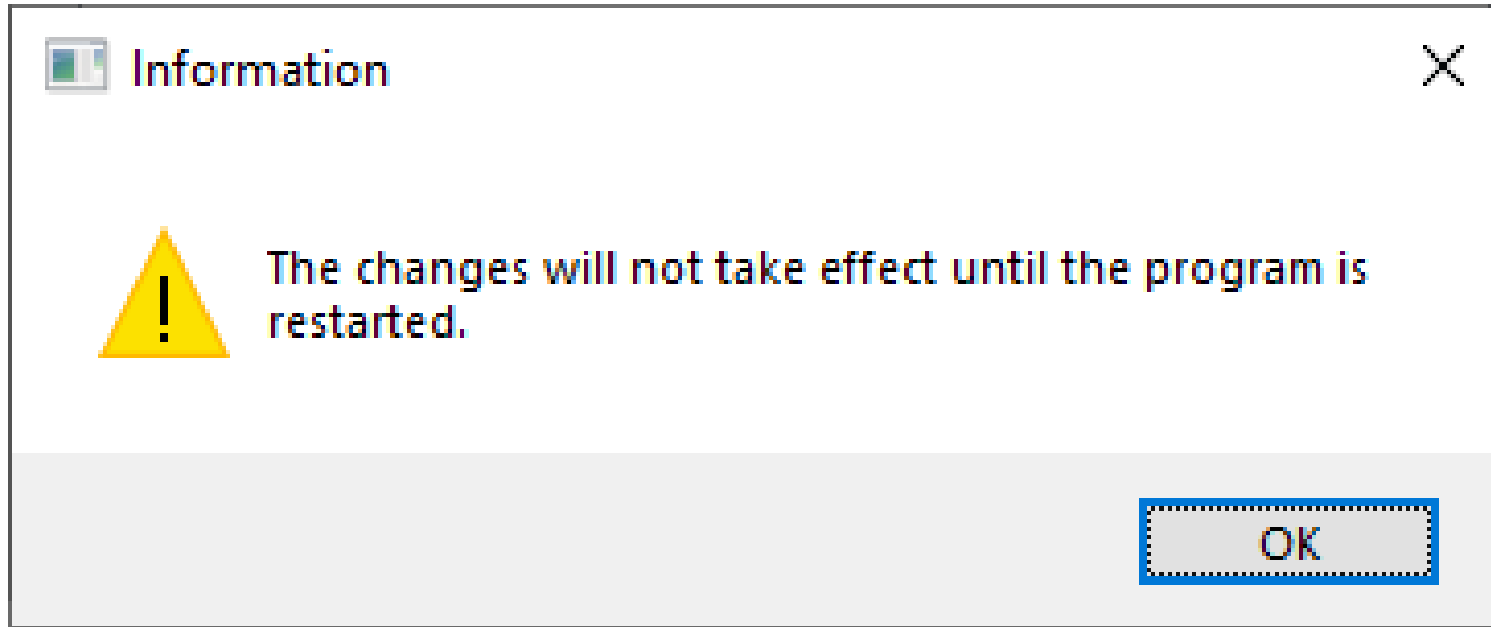


# Communication – Own Mail Box - LAN

1. Select the LAN mailbox (folder)
2. Use Default File Extension
3. Click OK
4. Click OK



# Communication – Own Mail Box - LAN



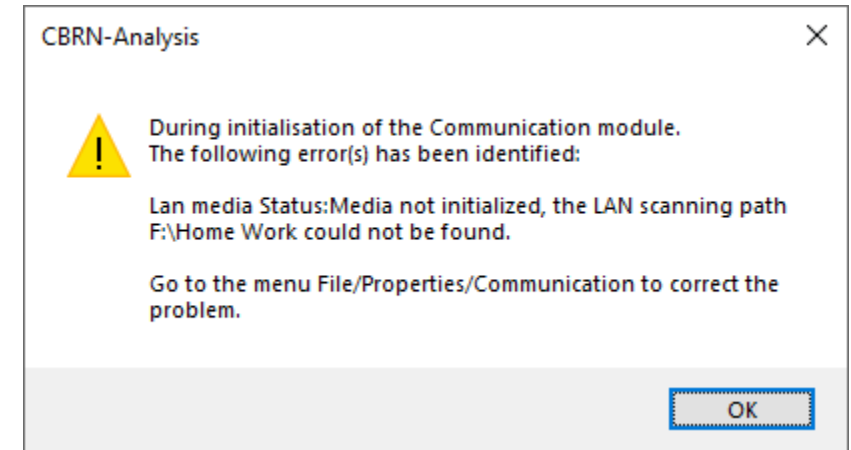
You will now be asked to **restart the program** (not the computer) before the setup is activated.

Click OK and restart CBRN-Analysis

# Communication – Own Mail Box - LAN

If this message (or a similar message) shows when the program start up explaining that your communication media is NOT available

The media selected as your mail box is not available e.g. because of wrong setting or (most likely) you have no connection to the LAN server (or your e-mail media)



You will not be able to communicate until this has been fixed.

Note that if the network is down (or the e-mail is not working) - this cannot be corrected by CBRN-Analysis, it is an external error

After the media has been restored you **must restart** the program to make your communication working again