

BRUHN
NEWTECH
LIFE SAVING SOFTWARE SOLUTIONS

How to Clear old Hazard Areas from Persistent Incident



www.bruhn-newtech.com

Introduction

Procedures for avoiding display and transmission of hazard areas not longer posing a hazard from persistent incident

- Definition and Purpose
- Procedure for number of future periods
- Procedure for excluding past periods
- Warnings

Definition and Purpose

This function is called “Clear Before Time” and applies only for Type B Chemical Persistent Incidents, where the hazard can last several days and change over time as the weather changes.

The function allows operator setting of the number of future weather periods to be calculated and to exclude hazards for weather periods in the past.

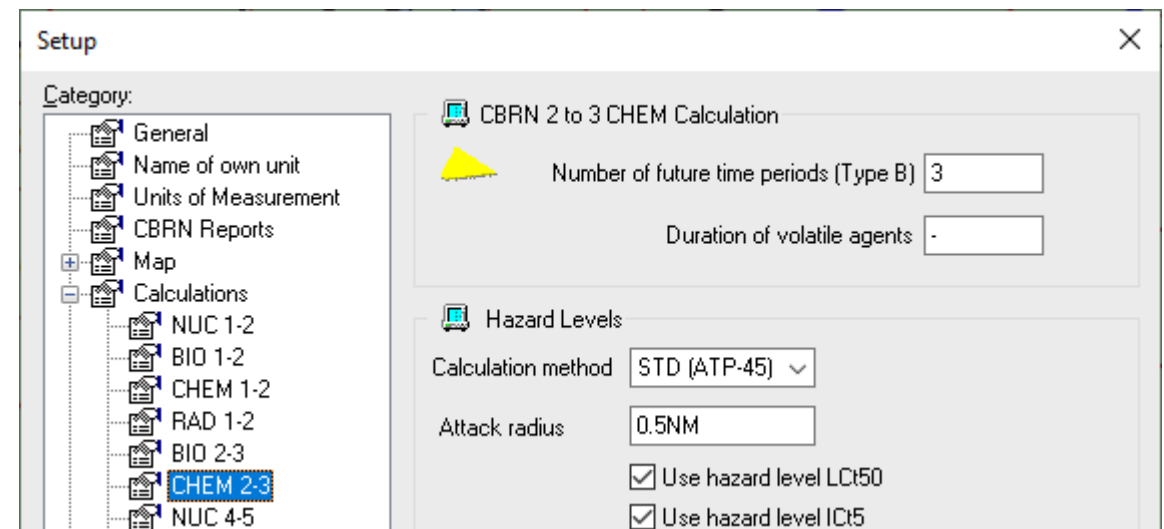
Procedure for number of future periods (1)

The number of weather periods is set in:

File -> Properties -> Setup -> Calculations -> CBRN 2 – 3

where default is 3 periods for persistent incidents.

The hazard area will be calculated for 3 weather periods from the CURRENT time, but only if CDM weather data is available from current time.



Procedure for number of future periods (2)

The number of available weather periods for each incident can be seen in the CBRN 2 Options tab.

Use of the current time means that the number of CDM periods initially are calculated from the incident DTG e.g. 1740Z and 3 CDM periods into the future.

But after e.g. 4 hours (2140Z = 2 weather periods) the calculation is done from 2140Z into the future, which requires 2 more weather periods to be available.

Example – Available weather periods




CDM's are available until 012200Z and significant changes can be seen graphically and in values for the periods.

Clear Before Time (Type B only) 011742ZFEB2019

Incident Time 011740ZFEB2019

DTG: 011740ZFEB2019

Available Weather Periods

	Start DTG	End DTG	MET type	AREAM	Wind speed	Wind direction	Stability
	011600ZFEB2019	011800ZFEB2019 (0HR)	CDR	NFWA	15KPH	045DGG	Neutral
	011800ZFEB2019	012000ZFEB2019 (2HR)	CDR	NFWA	14KPH	015DGG	Neutral
	012000ZFEB2019	012200ZFEB2019 (2HR)	CDR	NFWA	9KPH	010DGG	Neutral

Example – Excluding past periods






Hazard areas created from CDM's before 020400Z are now clear and these can be excluded from calculation.

Clear Before Time (Type B only)

011740ZFEB2019 020400ZFEB2019

DTG: 020400ZFEB2019

Available Weather Periods

	Start DTG	End DTG	MET ty...	AREAM	Wind speed	Wind direc...	Stability	Temperat...
	012200ZFEB2019	020000ZFEB2019 (2HR)	CDR	NFWA	17KPH	025DGG	Stable	17C
	020000ZFEB2019	020200ZFEB2019 (2HR)	CDR	NFWA	16KPH	340DGG	Stable	12C
	020200ZFEB2019	020400ZFEB2019 (2HR)	CDR	NFWA	15KPH	030DGG	Stable	10C
	020400ZFEB2019	020600ZFEB2019 (2HR)	CDR	NFWA	14KPH	090DGG	Stable	8C
	020600ZFEB2019	021000ZFEB2019 (4HR)	CDR	NFWA	12KPH	130DGG	Neutral	21C

Procedure for number of future periods (3)

When calculated after 020400Z the hazard areas before this time is not calculated, not shown and not included in the calculated (updated) CBRN 3 report.

If you still want to show 3 (or more) periods into the future this is now calculated from current time and 3 periods from 020400Z and ahead will be included and displayed.

Be aware that the responsibility for clearance of past hazard areas normally belongs to the CBRN ZCC or depends on the amount of sensors available in the area.

Warnings

If you have set the number of periods to be three (or even higher - up to six periods), it requires the CDM's available to cover up to twelve hours – if this is not the case you will get a warning that the required weather is not available for a particular incident serial number.

This warning will reappear every time you “Calculate” as the time passes by and the calculations for the required weather periods changes to be done from the current time (and not from the incident time).